



MAURICE BRAZIL PRENDERGAST

(1858-1924)

Dancing Figures No. 1, circa 1910-1913, watercolor and pencil on paper, 12 1/8 x 17 7/8 in.



ROBERT HENRI

(1865-1929)

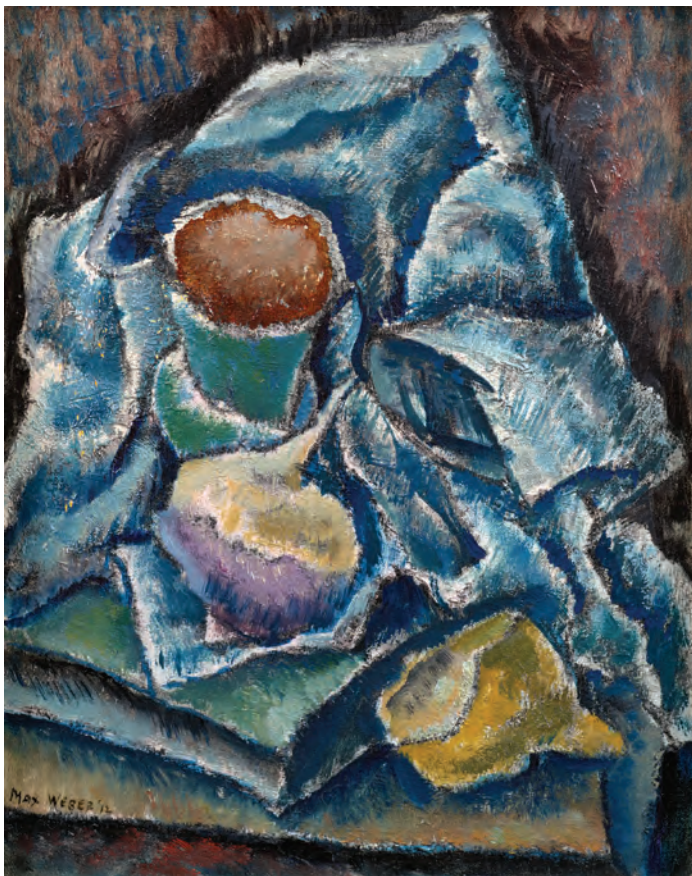
Chow Choy, 1914, oil on canvas, 32 x 26 in.



MAX WEBER

(1881-1961)

Still Life, 1912, oil on canvas board, 9 ³/₈ x 7 ¹/₄ in.



MAX WEBER

(1881-1961)

Primitive Head, 1917, oil on board, 8 ³/₈ x 5 ³/₈ in.



FLORINE STETTHEIMER

(1871-1944)

Flowers, 1915, oil on canvas, 30 1/8 x 34 in.



WILLIAM GLACKENS

(1870-1938)

Skaters at Lakewood,
New Jersey
circa 1920
oil on canvas board
12 x 15 ¾ in.



JOHN SLOAN

(1871-1951)

Harmony, 1906
charcoal and pencil on
paper, 14 ¾ x 21 ⅞ in.



ALFRED HENRY MAURER

(1868-1932)

Two Girls, circa 1925, oil on gessoed board, 26 1/8 x 18 in.



WILLIAM GLACKENS

(1870-1938)

Flowers on a Garden Chair, circa 1930
oil on canvas board, 16 x 12 3/4 in.



OSCAR
BLUEMNER

(1867-1938)

*Port at James Street,
Bloomfield, 1922*

gouache on paper
5 x 6 ¾ in.



ALFRED HENRY MAURER

(1868-1932)

Cubist Fruit Still Life, circa 1930

oil on gessoed panel, 11 ½ x 18 ¼ in.



GUY PÈNE DU BOIS

(1884-1958)

Masquerade Party, 1936, oil on canvas, 20 1/8 x 16 in.



WILLIAM GLACKENS

(1870-1938)

Fruit in a Red Basket, circa 1930
oil on canvas board, 13 x 16 in.



WILLIAM GLACKENS

(1870-1938)

Rowing on the River, France
circa 1925, oil on canvas board
8 x 10 in.



REGINALD MARSH

(1898-1954)

Girls on a Merry Go Round and Statue of Liberty: A double-sided watercolor
1946/1929, watercolor on paper, 14 x 20 in. (sight)



GIFFORD BEAL

(1879-1956)

Riding the Elephant, circa 1935
pastel on blue paper, 10 ¼ x 12 ½ in.



GEORGE BENJAMIN LUKS

(1867-1933)

Men at Sweeney's Near Houston Street
circa 1933, oil en grisaille on canvas
board, 15 7/8 x 20 in.





WALT KUHN
(1877-1949)
Girl in Clown Suit
1944, oil on canvas
22 x 20 in.



JOSEPH STELLA
(1877-1946)
Water Lily Blossom
circa 1925, colored pencil
and silverpoint on paper
12 1/8 x 9 in.



JEROME MYERS

(1867–1940)

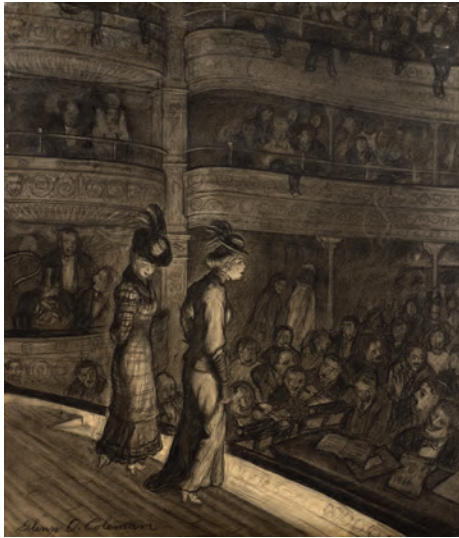
The Glow, circa 1913, oil on canvas, 15 7/8 x 20 in.



ERNEST LAWSON

(1873–1939)

The Elkton Mine, Cripple Creek, Colorado, circa 1927
oil on canvas board, 12 x 16 in.



GLENN O. COLEMAN

(1887–1932)

Amateur Night on the Bowery, circa 1910
charcoal on paper, 15 x 13 in.



JEROME MYERS

(1867–1940)

On the Pier, 1898, watercolor, pen and
black ink, and pencil on paper
7 1/8 x 8 3/4 in.



JEROME MYERS

(1867–1940)

Circus Crowd—Hippodrome, 1909
pencil on buff paper, 9 1/2 x 7 1/8 in.



OSCAR BLUEMNER
(1867-1938)

*Study "Winter Sun,"
Millcreek, Elizabeth,
New Jersey, 1925*
watercolor, gouache
and pencil on paper
5 x 6¾ in.



JOHN MARIN
(1870-1953)

*Street Movement,
Downtown Manhattan*
1940, pencil and crayon
on paper, 15 x 20 in.

BACK COVER

GASTON LACHAISE
(1882-1935)

*Ogunquit Torso, 1933, polished bronze
on black stone base, 10¾ in.*

A New York Collection: Ashcan and Modernism

NOVEMBER 16, 2020-JANUARY 15, 2021



Debra Force FINE ART, INC.

13 East 69th Street Suite 4F New York 10021 Tel 212.734.3636 www.debraforce.com